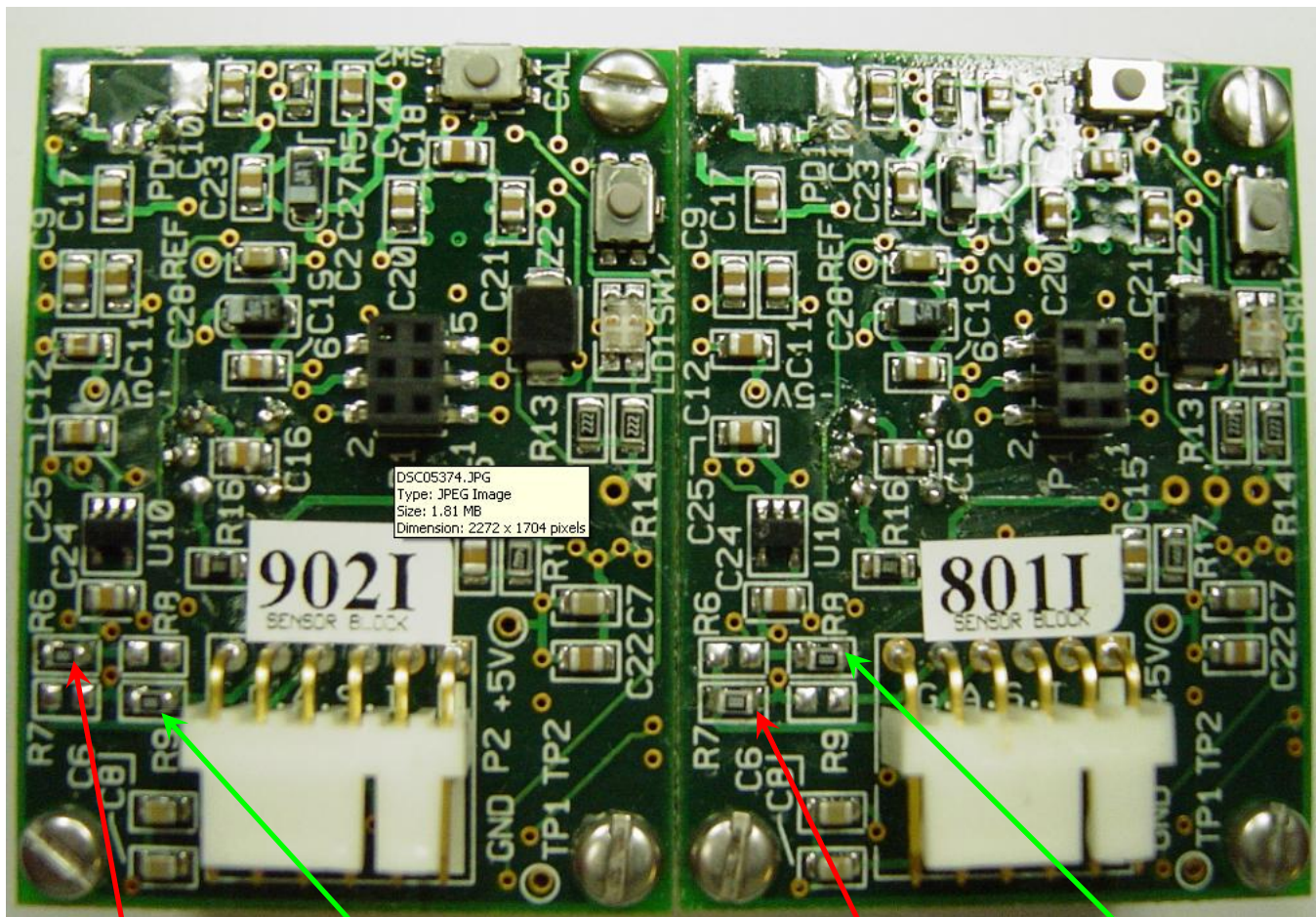


**801i / 902i Sensor Block Resistor Locations**

This service bulletin is to inform Galvanic's customers and service department of an issue where a small number of sensor assemblies had been produced with an incorrect resistor configuration. Although the incorrect sensor assemblies had been tracked down and reconfigured, this service bulletin has been released in order to help easily identify the correct configuration of resistors.



**R6**  
Resistor  
location for  
sensor block  
902I

**R9**  
Resistor  
location for  
sensor block  
902I

**R7**  
Resistor  
location for  
sensor block  
801I

**R8**  
Resistor  
location for  
sensor block  
801I